



### Bulletin 3

November 25, 2023

Topic: Chicanes on Jawbone Cyn, Oakbone, & Onyx

Two chicanes have been added to the following stages. Jawbone Cyn, Oakbone, & Onyx. Please see below for build and penalties associated. Both chicances are noted in the supplied stage notes/tulips.

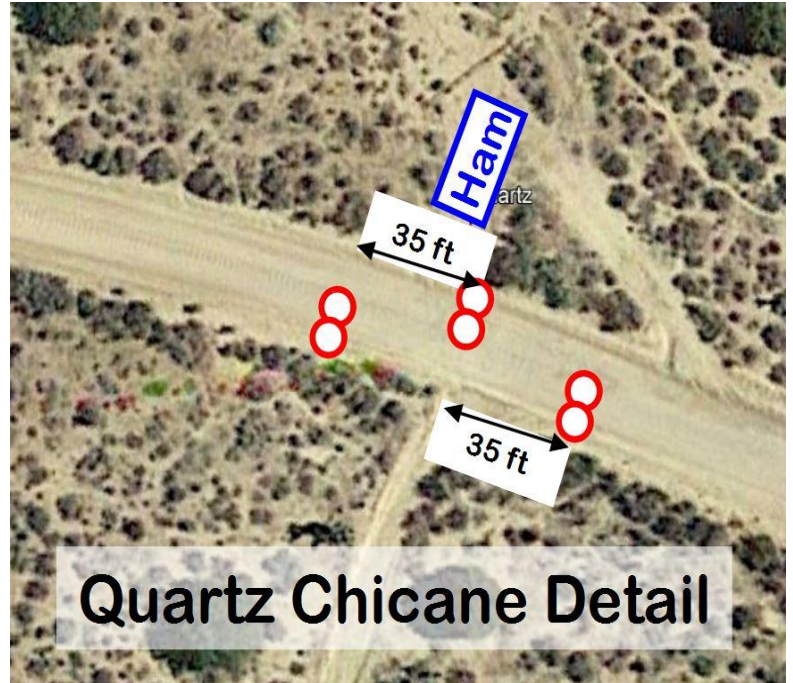
#### Gamma Chicane (Single Element)

The first chicane is at coordinate 35.37255, -118.11677. This is at the north intersection where Butterbredt and Jawbone Cyn meet. The chicane will be a single element chicane that forces cars to use the intersection as a delta. When running Jawbone Cyn N (SS1), Oakbone W (SS5), Onyx N (SS7) the entrance to the chicane will be on the RIGHT. When running Jawbone Cyn S (SS4), Oakbone E (SS6), Onyx S (SS12) the entrance will be on the LEFT.



### Quartz Chicane (3 Element)

The second chicane is at coordinate 35.38422, -118.18665. This is at the north end of Jawbone Canyon Rd. The chicane will be a 3 element chicane with a RIGHT side entrance when running Jawbone Cyn Rd N (SS1), Oakbone W (SS5), and Onyx N (SS7). When run in reverse the chicane features a LEFT side entrance when running Jawbone Cyn Rd S (SS4) Oakbone E (SS6), and Onyx S (SS12).



### Chicane Build & Penalties

Each chicane will be set up with multiple reflective 36" traffic cones. Each traffic cone hit will count towards the overall penalty for a competitor not negotiating the chicane properly. Penalties will be issued when cones are dislodged out of place or if the cone is knocked over. Reference RCR 1.3.2 (E) for definition of striking an element. Penalty will be applied for each cone dislodged or knocked over. Penalties are as followed:

### Chicane Penalties (I.A.W RCR 6.2)

For each cone struck	15 second penalty
Failure to negotiate Chicane	Stage Lateness Time

James Veatch III

Clerk of the Course